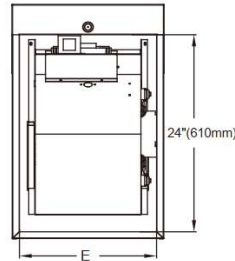
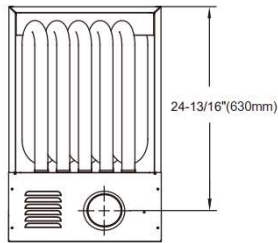
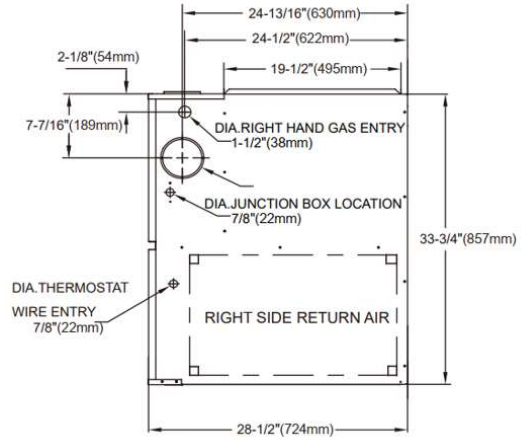
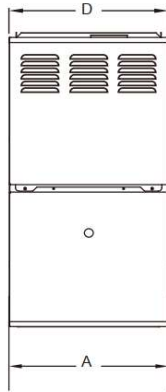
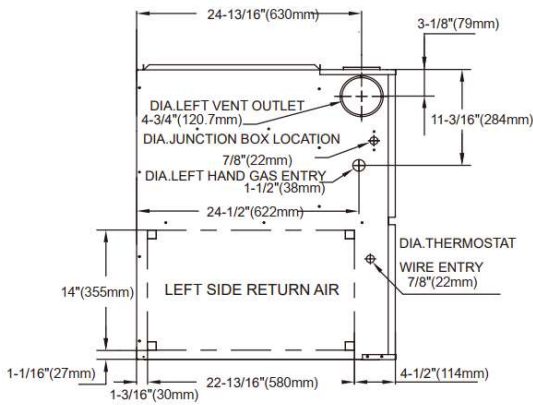




TAG: _____

SUBMITTAL

80% AFUE Gas Furnace



	A CABINET WIDTH IN.	D SUPPLY AIR WIDTH IN.	E RETURN AIR WIDTH IN.	SHIP WT (lbs)
J801V040AM3SEB	14.5	13	15-57/32	119
J801V060AM3SEB	14.5	13	15-57/32	119
J801V060BM4SEB	17.5	16	15-27/32	126
J801V080BM4SEB	17.5	16	15-27/32	139
J801V080CM5SEB	21	19.5	19-13/32	146
J801V100CM5SEB	21	19.5	19-13/32	159
J801V120DM5SEB	24.5	23	22-27/32	170

PRODUCT SPECIFICATIONS

	J801V040AM3SEB	J801V060AM3SEB	J801V060BM4SEB	J801V080BM4SEB
FUEL TYPE	Natural/Propane Gas	Natural/Propane Gas	Natural/Propane Gas	Natural/Propane Gas
GAS HEATING PERFORMANCE				
Input (BTU/h)	40,000	60,000	60,000	80,000
Output (BTU/h)				
Natural Gas	32,000	48,000	48,000	64,000
LP Gas	32,000	48,000	48,000	64,000
AFUE	80	80	80	80
Available AC @ 0.5" ESP	1/1.5/2/2.5	1.5/2/2.5/3	1.5/2/2.5/3	2.5/3/3.5/4
Temperature Rise Range (° F)	20-50	25-55	25-55	30-60
ELECTRICAL DATA				
Voltage/Phase(60Hz)	115	115	115	115
Min. / Max. Voltage	104/127	104/127	104/127	104/127
Min. Circuit Ampacity	8.4	8.4	9.2	9.2
Max. Overcurrent Protection	15	15	15	15
FAN MOTOR				
Motor Type	ECM	ECM	ECM	ECM
Horsepower	1/2	1/2	1/2	1/2
Rated RPM	1050	1050	1050	1050
Full Load Amps (FLA)	6.7	6.7	7.3	7.3
Capacitor (uF)	\	\	\	\
CIRCULATOR BLOWER				
Material	Metal	Metal	Metal	Metal
Type	Centrifugal	Centrifugal	Centrifugal	Centrifugal
Size (D x H) (in.)	11-3/16x 6-9/64	11-3/16x 6-9/64	11-3/16x 9-41/64	11-3/16x 9-41/64
Vent Diameter ¹	3"/4"	3"/4"	3"/4"	3"/4"
No. of Burners	3	3	3	5
Speed Mode Number	5	5	5	5

PRODUCT SPECIFICATIONS

	J801V080CM4SEB	J801V100CM5SEB	J801V120DM5SEB
FUEL TYPE	Natural/Propane Gas	Natural/Propane Gas	Natural/Propane Gas
GAS HEATING PERFORMANCE			
Input (BTU/h)	80,000	100000	120000
Output (BTU/h)			
Natural Gas	64,000	80,000	96,000
LP Gas	64,000	80,000	96,000
AFUE	80	80	80
Available AC @ 0.5" ESP	2.5/3/3.5/4	3.5/4/4.5/5	3.5/4/4.5/5
Temperature Rise Range(° F)	30-60	30-60	35-65
ELECTRICAL DATA			
Voltage/Phase(60Hz)	115	115	115
Min. / Max. Voltage	104/127	104/127	104/127
Min. Circuit Ampacity	9.0	14.0	14.8
Max. Overcurrent Protection	15	20	20
FAN MOTOR			
Motor Type	ECM	ECM	ECM
Horsepower	1/2	1	1
Rated RPM	1050	1050	1050
Full Load Amps (FLA)	7.2	11.2	11.8
Capacitor (uF)	\	\	\
CIRCULATOR BLOWER			
Material	Metal	Metal	Metal
Type	Centrifugal	Centrifugal	Centrifugal
Size (D x H) (in.)	11-3/16 x 11-3/16	11-3/16 x 11-3/16	12-6/8 x 11-1/4
Vent Diameter ¹	3"/4"	3"/4"	3"/4"
No. of Burners	5	6	7
Speed Mode Number	5	5	5

Standard Features:

- Durable aluminized steel tubular heat exchanger.
- Efficient and quiet variable speed ECM, constant air volume control technology, stable air outlet with different pipe resistances
- Two-stage gas valve provides quiet, economical heating
- Silicon Nitride igniter designed for long igniter life
- Self-diagnostic control board with constant memory fault code history output to a triple 7-segment display
- Natural gas and propane (LP) convertible.
- NOx emissions above 40ng/J.
- AHRI Certified; ETL Listed

Cabinet Features:

- Designed for multi-position installation: Up flow, down flow, horizontal.
- Industry-standard cabinet sizes for easy replacement, installation and add-on cooling.
- Convenient left or right connection for gas and electric service.
- Removable bottom for side or bottom return application.
- Coil and furnace fit flush for most installations
- Air leakage is less than 2%



The manufacturer has a policy of continuous product and product data improvement and it reserves the right to change design and specification without notice.