

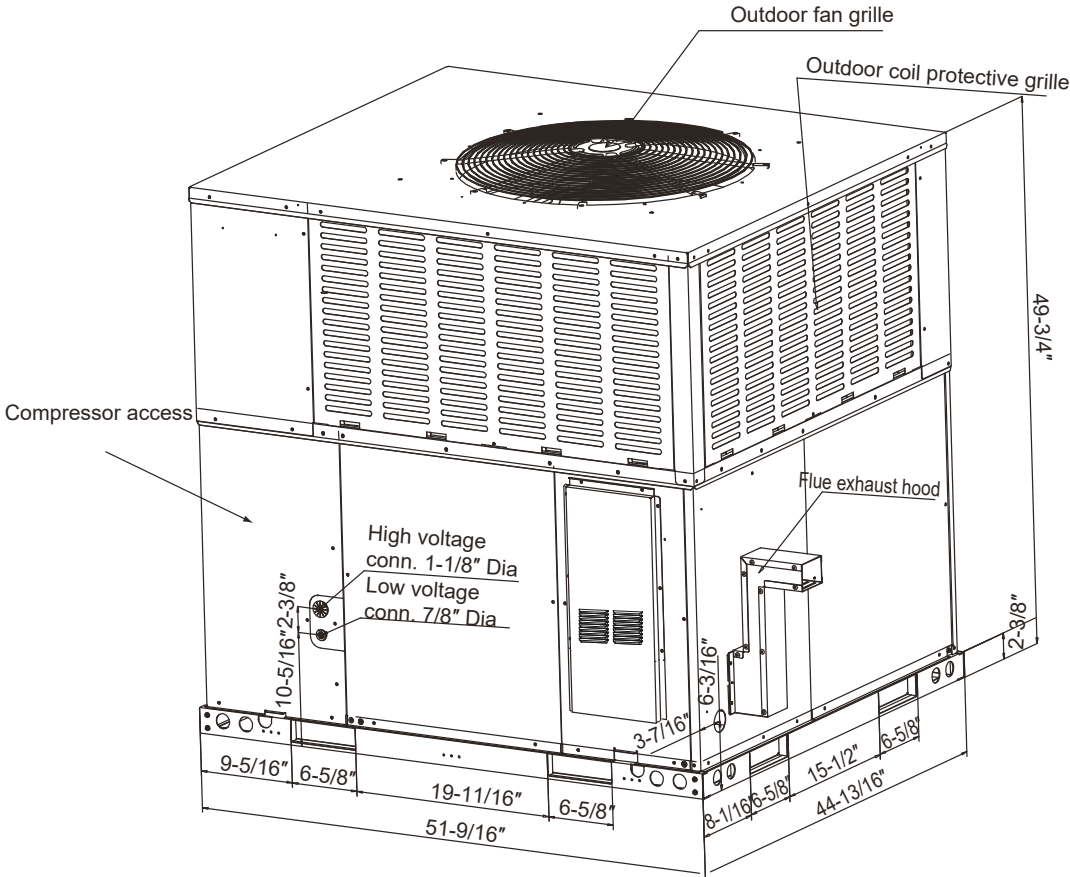


J5PG4060A1110\*

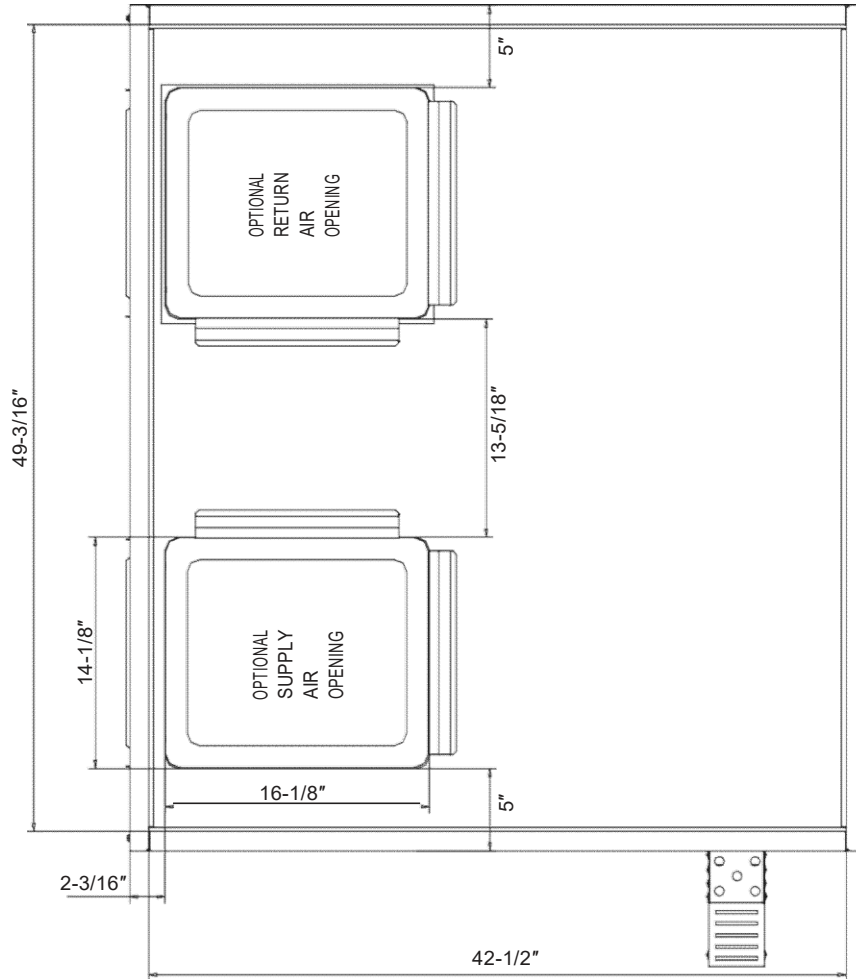
TAG: \_\_\_\_\_

# SUBMITTAL

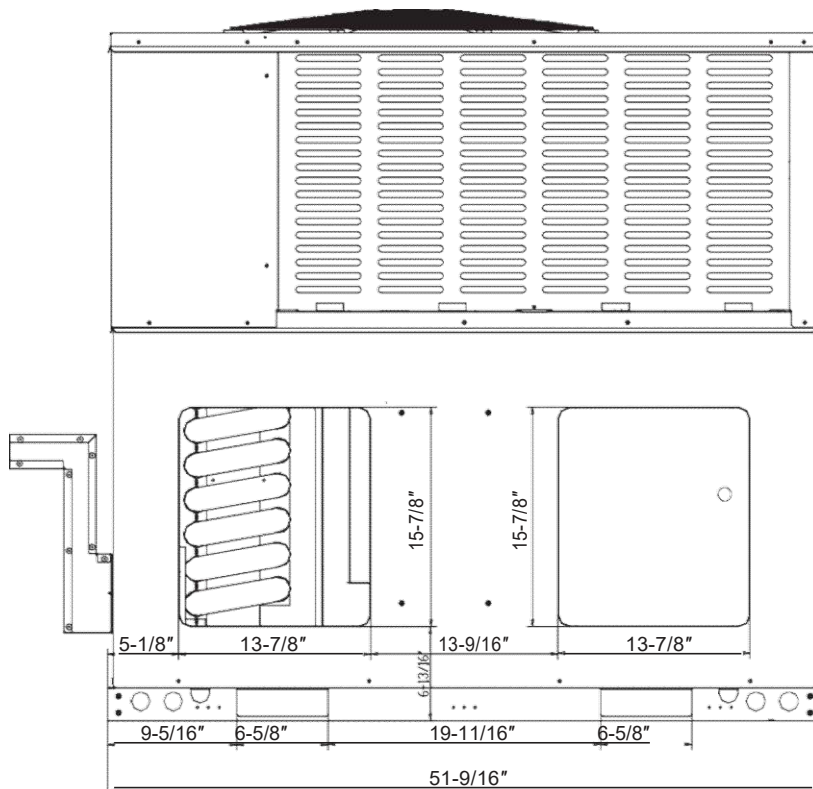
5.0 Ton  
High-Efficiency Gas Package Unit  
J5PG4060A1110\*



Bottom view



Back view



Dimensions Back and Bottom

## PRODUCT SPECIFICATIONS

### Specifications

MODEL	J5PG4060A1110*
POWER CONNS. - V/PH/HZ	208/230/1/60
RATED CURRENT	41.4
MAXIMUM OVERCURRENT PROTECTION	68.4
SOUND POWER LEVEL[dB(A)]	80
GAS HEATING PERFORMANCE	
HEATING INPUT (Btu)	110,000
HEATING OUTPUT (Btu)	88,000
TEMP. RISE RANGE (°F)	30-60
AFUE (%)	81
GAS CONNS. PIPE SIZE	1/2NPT
COMPRESSOR	SCROLL
NO. USED- NO. SPEEDS	1-1
VOLTS/PH/HZ	208/230/1/60
R.L. AMPS- L.R. AMPS	27 - 125
CONDENSER FAN	PSC
DIA. (IN.)	26.37
TYPE DRIVE- NO. SPEEDS	AC - 1
MOTOR HP	1/3
MOTOR SPEED R.P.M.	1070
VOLTS/PH/HZ	208/230/1/60
F.L. AMPS	1.9
CONDENSER COIL	Microchannel
ROWS- F.P.I.	2-23
FACE AREA (SQ. FT.)	20.2
TUBE SIZE (IN.)	/

EVAPORATOR FAN	ECM
DRIVE- NO. SPEEDS	DIRECT - 5
CFM VS. IN. WG.	See Fan Performance Table
MOTOR HP	3/4
MOTOR SPEED R.P.M.	1050
VOLTS/PH/HZ	208/230/1/60
F.L. AMPS	5.7
EVAPORATOR COIL	Aluminum tube&fin
ROWS- F.P.I.	4 - 17
FACE AREA (SQ. FT.)	6.14
TUBE SIZE (IN.)	9/32
REFRIGERANT CONTROL	ORIFICE
REFRIGERANT	
LBS. -R-454B	3 LBS. - 12 OZ. W
REFRIGERANT SENSOR	NO
DIMENSIONS	W X H X D
CRATED (IN.)	52-1/8 x 52-3/86 x45-1/4
WEIGHT	
SHIPPING (LBS.)	584
NET (LBS.)	562

### Fan Performance Table

Model Number	Motor Speed	External Static Pressure-Inches W.C.[kPa]											
			0[0]	0.1[.02]	0.20.1[.05]	0.30.1[.07]	0.40.1[.10]	0.50.1[.12]	0.60.1[.15]	0.70.1[.17]	0.80.1[.20]	0.90.1[.23]	1.00.1[.25]
60 (090)	Middle-2 (Tap3)	CFM	1854	1791	28	1662	02	1539	/	/	/	/	/
		Current/A	3.36	3.44	3.52	3.61	3.69	3.78	/	/	/	/	/
		Power/W	405	415	426	438	449	461	/	/	/	/	/
	Middle-3 (Tap4)	CFM	2026	1973	1918	1860	1802	1748	1691	1632	1575	1526	/
		Current/A	4.26	4.36	4.46	4.56	4.65	4.74	4.84	4.93	5.03	5.12	/
		Power/W	525	538	551	565	578	590	603	616	629	642	/
	High (Tap5)	CFM	2150	2098	2044	1989	1932	1861	1787	1712	1660	1594	1536
		Current/A	5.07	5.18	5.27	5.37	5.47	5.47	5.45	5.43	5.45	5.45	5.48
		Power/W	640	658	671	685	699	699	696	694	688	690	696

# Features

---

- Single-stage gas heating(LP conversion kit provided with each unit).
- Bottom or side air return.
- Uses more environmentally friendly R454B refrigerant.
- Quiet multi-speed circulation blower.
- Direct spark ignition.
- AHRI certified and ETL listed.
- Suitable for Manufactured/Mobile Home Use.
- Coil has hydrophilic coating which improves corrosion resistance.
- Anti-rust steel cabinets, 500-hour salt spray tested.
- High efficiency compressors operate smoothly, quietly, and consistently.



The manufacturer has a policy of continuous product and product data improvement and it reserves the right to change design and specification without notice.

BX-PRQ-J5PG4060A1110A-1A