

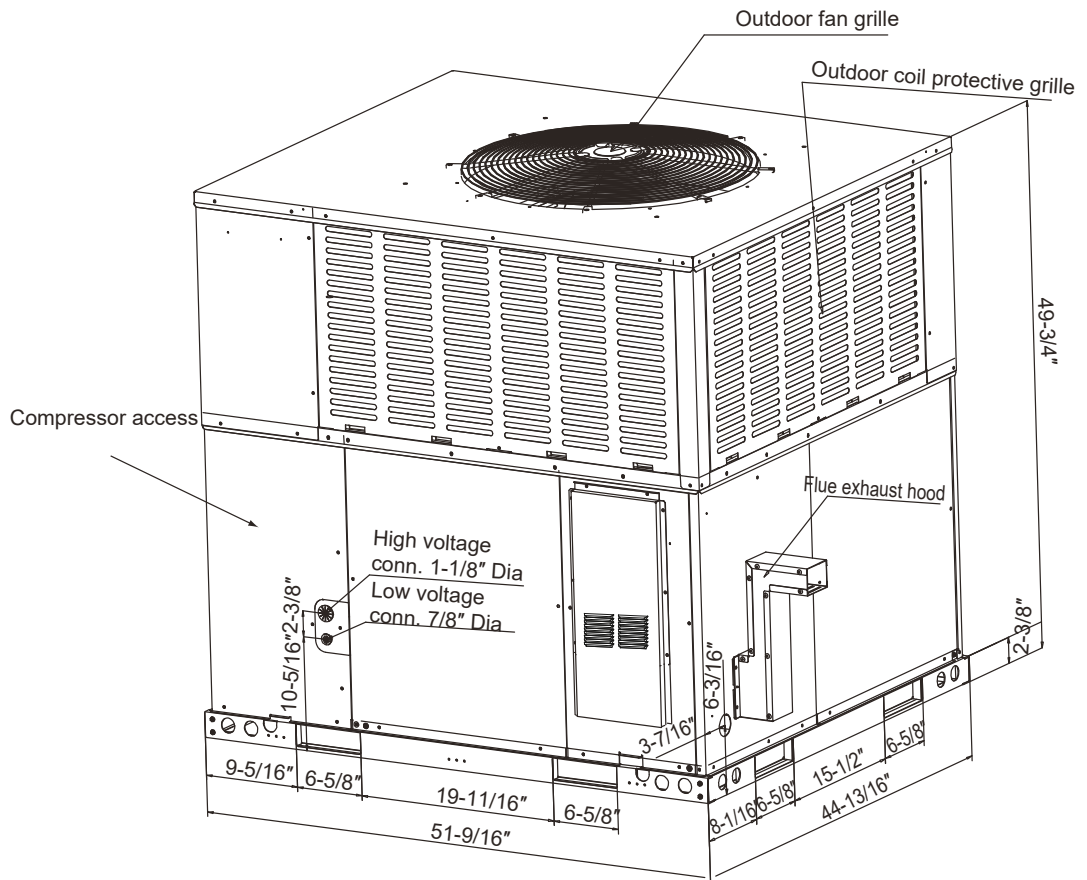


J5PG4048A1090*

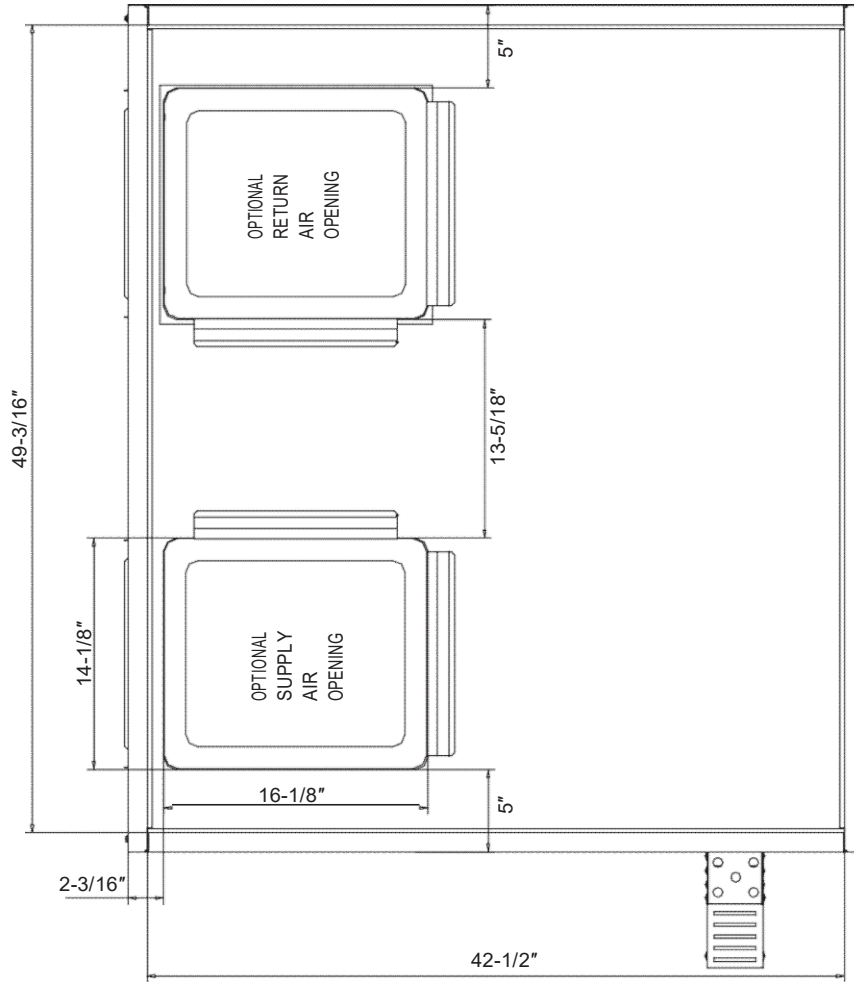
TAG: _____

SUBMITTAL

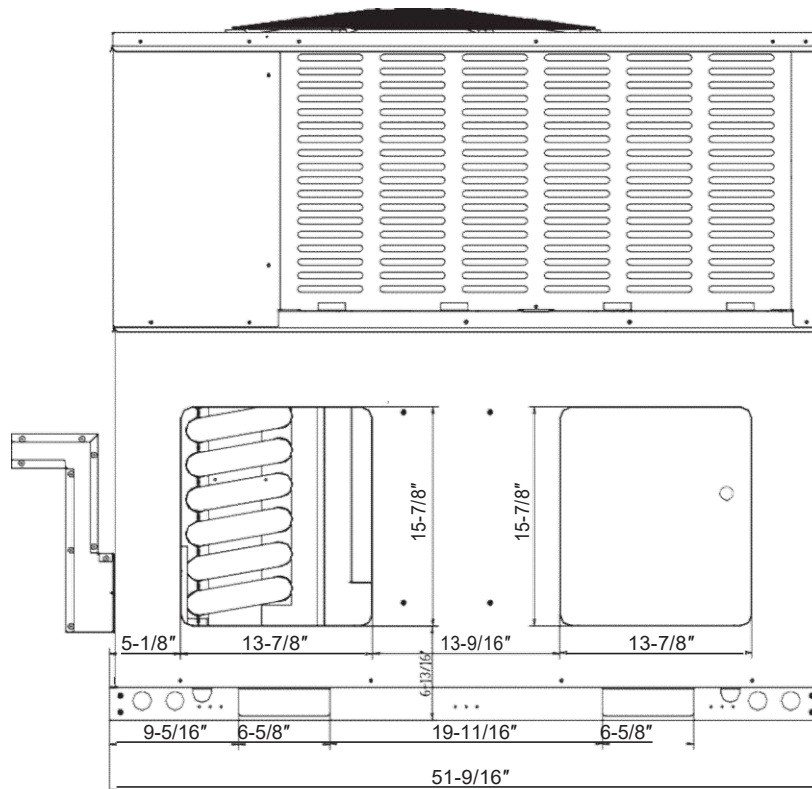
4.0 Ton
High-Efficiency Gas Package Unit
J5PG4048A1090*



Bottom view



Back view



Dimensions Back and Bottom

PRODUCT SPECIFICATIONS

Specifications

MODEL	J5PG4048A1090*
POWER CONNS. - V/PH/HZ	208/230/1/60
RATED CURRENT	36.4
MAXIMUM OVERCURRENT PROTECTION	59.4
SOUND POWER LEVEL[dB(A)]	80
GAS HEATING PERFORMANCE	
HEATING INPUT (Btu)	90,000
HEATING OUTPUT (Btu)	72,000
TEMP. RISE RANGE (°F)	25-55
AFUE (%)	81
GAS CONNS. PIPE SIZE	1/2NPT
COMPRESSOR	SCROLL
NO. USED- NO. SPEEDS	1-1
VOLTS/PH/HZ	208/230/1/60
R.L. AMPS- L.R. AMPS	23 - 98
CONDENSER FAN	PSC
DIA. (IN.)	26.37
TYPE DRIVE- NO. SPEEDS	AC-1
MOTOR HP	1/3
MOTOR SPEED R.P.M.	1070
VOLTS/PH/HZ	208/230/1/60
F.L. AMPS	1.9
CONDENSER COIL	Microchannel
ROWS- F.P.I.	2-23
FACE AREA (SQ. FT.)	20.2
TUBE SIZE (IN.)	/

EVAPORATOR FAN	ECM
DRIVE- NO. SPEEDS	DIRECT - 5
CFM VS. IN. WG.	See Fan Performance Table
MOTOR HP	3/4
MOTOR SPEED R.P.M.	1050
VOLTS/PH/HZ	208/230/1/60
F.L. AMPS	5.7
EVAPORATOR COIL	Aluminum tube&fin
ROWS- F.P.I.	4 - 17
FACE AREA (SQ. FT.)	6.14
TUBE SIZE (IN.)	9/32
REFRIGERANT CONTROL	ORIFICE
REFRIGERANT	
LBS. - R-454B	3 LBS. - 1 2 OZ.
REFRIGERANT SENSOR	NO
DIMENSIONS	W X H X D
CRATED (IN.)	52-1/8 x 52-3/8 x 45-1/4
WEIGHT	
SHIPPING (LBS.)	581
NET (LBS.)	560

Fan Performance Table

Model Number	Motor Speed	External Static Pressure-Inches W.C.[kPa]											
			0[0]	0.1[.02]	0.20.1[.05]	0.30.1[.07]	0.40.1[.10]	0.50.1[.12]	0.60.1[.15]	0.70.1[.17]	0.80.1[.20]	0.90.1[.23]	1.00.1[.25]
48	Middle-1 (Tap2)	CFM	1437	1359	1284	1210	/	/	/	/	/	/	/
		Current/A	202	1.88	1.96	2.04	/	/	/	/	/	/	/
		Power/W	1437	212	223	233	/	/	/	/	/	/	/
	Middle-2 (Tap3)	CFM	/	1791	1728	1662	1602	1539	1475	1419	1364	1309	1252
		Current/A	/	3.44	3.52	3.61	3.69	3.78	3.87	3.96	4.05	4.15	4.25
		Power/W	/	415	426	438	449	461	472	485	497	510	523
	Middle-3 (Tap4)	CFM	/	/	/	/	/	1748	1691	1632	1575	1526	1474
		Current/A	/	/	/	/	/	4.74	4.84	4.93	5.03	5.12	5.23
		Power/W	/	/	/	/	/	590	603	616	629	642	655
	High (Tap5)	CFM	/	/	/	/	/	/	1787	1712	1660	1594	1536
		Current/A	/	/	/	/	/	/	5.45	5.43	5.45	5.45	5.48
		Power/W	/	/	/	/	/	/	696	694	688	690	696

Features

- Single-stage gas heating(LP conversion kit provided with each unit).
- Bottom or side air return.
- Uses more environmentally friendly R454B refrigerant.
- Quiet multi-speed circulation blower.
- Direct spark ignition.
- AHRI certified and ETL listed.
- Suitable for Manufactured/Mobile Home Use.
- Coil has hydrophilic coating which improves corrosion resistance.
- Anti-rust steel cabinets, 500-hour salt spray tested.
- High efficiency compressors operate smoothly, quietly, and consistently.

OXBOX[™]
A TRANE® BRAND



The manufacturer has a policy of continuous product and product data improvement and it reserves the right to change design and specification without notice.

BX-PRQ-J5PG4048A1090A-1A